



Construction Manager at Risk Services: SAWS BGD Program

May 23, 2012

Pre-submittal Meeting

Philip C. Campos, Jr., CPA
Director/Contracting

Esther Harrah, PE
Manager/Engineering

Pre-Submittal Overview

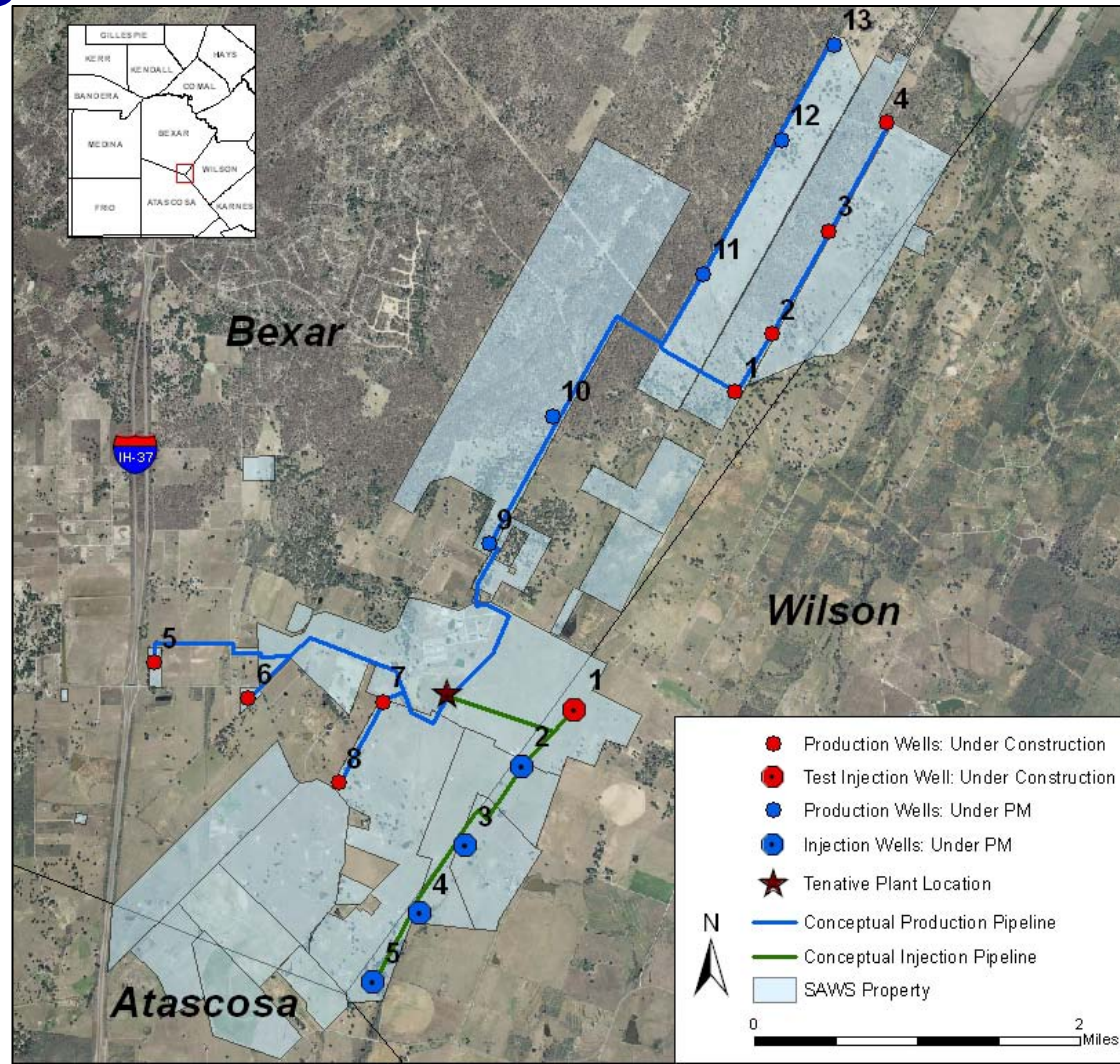
- Items to be discussed:
 - Program Overview
 - Key Dates
 - Key Elements of Solicitation
 - Items to be Scored
 - Evaluation Process
 - Next Steps

Program Overview

Components

- Five (5) Production Wells
- Up to Four (4) Injection Wells
- Reverse Osmosis Treatment Plant
- Design of approximately 59,000 linear feet of buried collection piping.
- Design of approximately 11,000 linear feet of buried disposal piping.

Program Overview



May 23, 2012

Construction Manager at Risk Services: SAWS BGD Program

Program Overview

Current Status

- Black & Veatch has been selected as the Program Manager. The Program concept development phase is in progress.
- Layne Christensen constructing SAWS Test Injection Well
- Layne Christensen is constructing Production Wells (1-8)

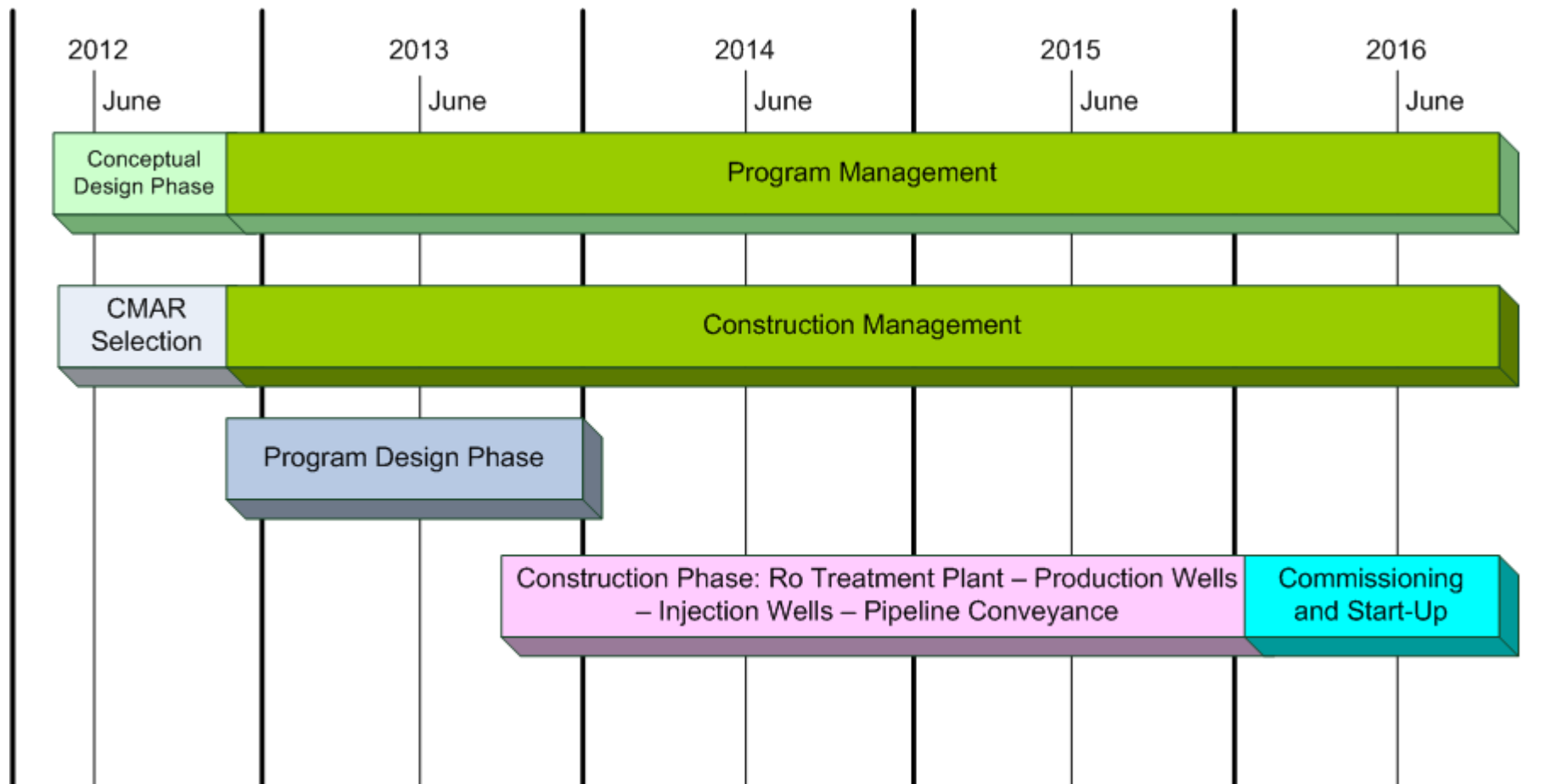
May 23, 2012

Construction Manager at Risk Services: SAWS BGD Program



Program Overview

Schedule



May 23, 2012

CMAR Requirements

Scope of CMAR Services



- Pre-construction Phase Services
 - Approximately 9 Months
- Construction Management
- General Conditions
- Value Engineering
- Commissioning Phase Services

May 23, 2012

Construction Manager at Risk Services: SAWS BGD Program

Commissioning Phase Services

Scope of CMAR Services

- Provide for the *startup, commissioning and testing* of the system for a *minimum of six (6) months and may extend for a period of up to one (1) year.*
- *Commissioning shall include operating and maintaining the system during the period prior to completion of testing and transfer of control to SAWS*
- During this *commissioning* phase, the *CMAR* shall provide training to the SAWS staff to transition the *control of the system upon successful completion of testing activities.*

CMAR Key Dates

- RFQ release date – May 1, 2012
- Two Addendums as of May 16, 2012
- Pre-submittal Meeting – May 23, 2012
- Written Questions due – June 1, 2012
- Answers to Questions – June 8, 2012
- Submittals Due – June 21, 2012 @ 4 pm

May 23, 2012

Construction Manager at Risk Services: SAWS BGD Program



CMAR Key Elements

- Submit all questions in writing
 - No later than June 1st @ 4 pm CT
- Submittals Due – June 21, 2012 @ 4 pm CT
 - Contracting Department – Customer Svc Bldg Room 171
 - Allow time to check-in with Guards
- Page requirement is 60 pages or less
- Subscribe to the CMAR Solicitation
 - Vendor Registration System
 - Notification of future changes

May 23, 2012

Construction Manager at Risk Services: SAWS BGD Program



CMAR Evaluation

- Five Evaluation Criteria

Criteria	Max Points	Max Pages
Project Team	20	14
Past Project Approach	35	15
Comparable Experience	15	15
Quality Assurance/Quality Control	15	10
SMWB Experience	15	6
Total	100	60

May 23, 2012

Construction Manager at Risk Services: SAWS BGD Program



SAWS Selection Process

Two Step Selection

- Request for Qualifications:
 - Technical Evaluation Committee:
 - Scored from the published criteria
 - Narrow to no more than five firms
- RFP issued to shortlisted firms
- Proposals Evaluated:
 - Selection Committee
 - Scored from the published criteria
 - Interviews are an option

Technical DVD Available

- Feasibility Study Report
- RO Membrane Pilot Study Report
- Pipe Loop Study
 - Impact of finished water on SAWS infrastructure
- Injection Well (Notice of Intent) General Permit
- Environmental Assessments
 - Production Wells Property
 - Test Injection Well Property

May 23, 2012

Construction Manager at Risk Services: SAWS BGD Program



Next Steps

- RFQ Submittals Evaluated June through July 2012
- Anticipated SAWS Board Award - December 2012
- CMAR Agreement Execution - December 2012
- Non-Selection Notices Mailed - December 2012
- Authorization to Proceed - January 2013

May 23, 2012

Construction Manager at Risk Services: SAWS BGD Program





Construction Manager at Risk Services: SAWS BGD Program

May 23, 2012

Pre-submittal Meeting

Philip C. Campos, Jr., CPA
Director/Contracting

Esther Harrah, PE
Manager/Engineering